

# MONTHLY MEMBERSHIP PROGRESS REPORT

LOCATION OHIO

District 13 OH3

Results as of: 5/31/2023

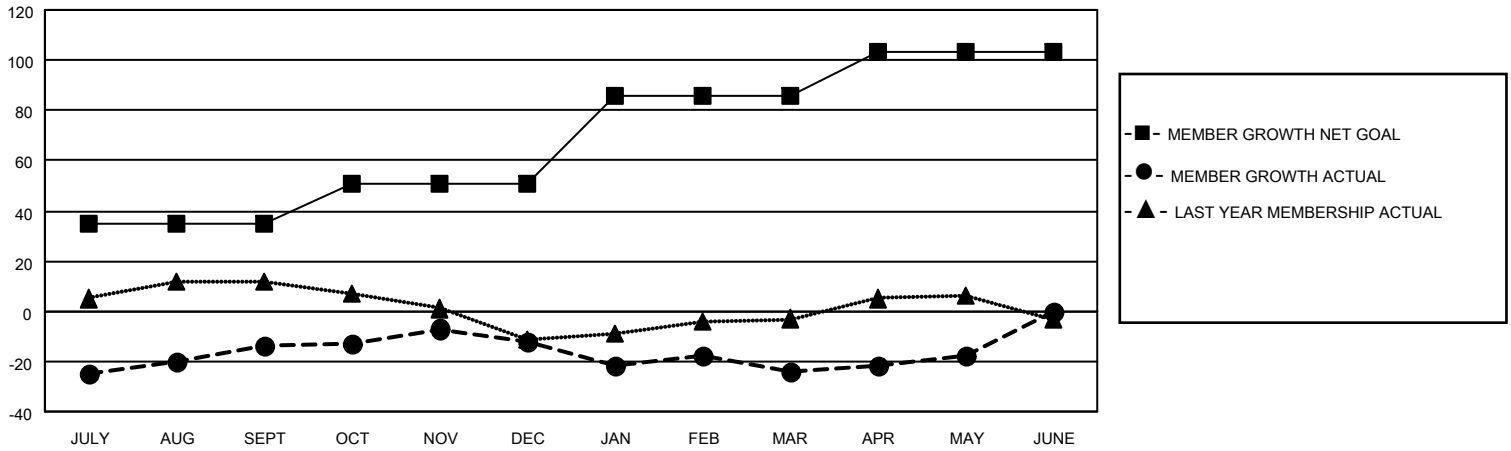
Clubs			
RESULTS FOR 2022-2023			
QUARTER	NEW CLUB GOAL	NEW CLUBS	DROPPED CLUBS
JULY/AUG/SEPT	0	0	1
OCT/NOV/DEC	1	0	0
JAN/FEB/MAR	0	0	0
APR/MAY/JUNE	1	0	1

Members			
RESULTS FOR 2022-2023			
QUARTER	MEMBER GROWTH NET GOAL	MEMBER GROWTH ACTUAL	DROPPED MEMBERS ACTUAL (including transfers)
JULY/AUG/SEPT	35	30	43
OCT/NOV/DEC	16	46	41
JAN/FEB/MAR	35	28	37
APR/MAY/JUNE	17	26	20

**GOALS AND ACTUAL NEW CLUBS CUMULATIVE**



**GOALS AND ACTUAL MEMBERS CUMULATIVE**



**DROPPED CLUBS: 2**

**30 CLUBS OF 53 ADDED 1 OR MORE NEW MEMBERS**

**GENDER DISTRIBUTION**

MALE	903 (66.06%)
FEMALE	463 (33.87%)
NON BINARY	0 (0.00%)
PREFER NOT TO ANSWER	1 (0.07%)

**DROPPED MEMBERS**

[CLICK HERE FOR CUMULATIVE MEMBERSHIP DATA](#)

DECEASED	27
CLUB CANCELLED	0
OTHER	114
<b>TOTAL</b>	<b>141</b>

TOTAL FAMILY UNIT MEMBERS	289
FAMILY MEMBERS PAYING HALF DUES	148